

Sonesse® 28 WireFree RTS (Li-ion)



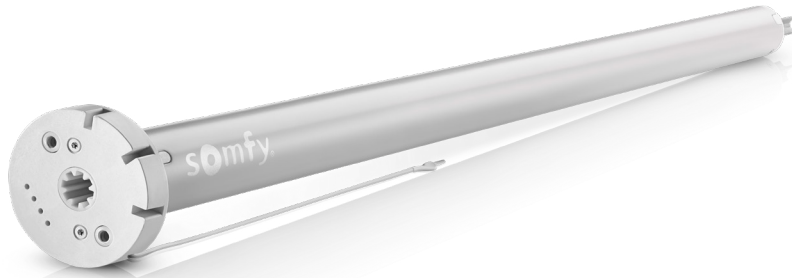
Somfy
DESIGNED FOR
SILENCE



WireFree™



Radio Technology Somfy®



Somfy recommends

the use of Somfy crowns & drives for optimal performance. (Note: The Sonesse 28 WireFree range of crowns & drives are compatible with the Sonesse 30 24V DC range.)

Quiet Wireless Solution for Interior Window Coverings

The new Sonesse® 28 WireFree RTS Li-ion is the most recent addition to the “Designed for Silence” wirefree motor range. Its improved Sonesse sound level provides quiet performance for today’s decorative shading solutions.

Compatible end-products



Roller shades



Roman shades



Woven woods



Sheer horizontals



Layered/
Zebra shades



Venetian blinds

Main features & benefits

- Improved Sonesse sound level
- Built-in rechargeable lithium-ion battery
- Recessed programming button
- Improved, smaller diameter head design
- Quick lock drive
- LED low battery indicator
- Removeable charging cable
- Smooth motion with adjustable speed control
- Compatible with Telis Modulis for precise tilt control of sheer shades
- Solar charging option
- ESD immunity
- Operates with simple voice commands using TaHoma® switch and Amazon Alexa or Google Home

Sonesse® 28 WireFree RTS (Li-ion)



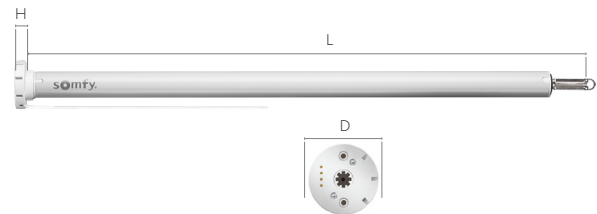
Item #: 1003297

Technical data

Voltage Supply	12V DC
Index Protecting Rating	IP 30 (for indoor use only)
Limit Switch Type	Electronic
Temperature Working Range	32°F to 140°F (0°C to 60°C)
Insulation Class	Class III
Antenna	17+1 cm, wire length, must not be cut or lengthened. For greatest RF range, must not be exposed and should not come in contact with metal surfaces. RF wire may need to be repositioned for optimal performance.

Dimensions

Motor Length (L)	21.61 in. (549mm)
Head Thickness (H)	.36 in. (9mm)
Head Diameter Ø (D)	1.73 in. (44mm)



Performances

Nominal Torque	1.1 Nm
Nominal Speed	20 rpm
Adjustable Speed	10 to 28 by increment of 2 rpm
Sound Level	< 49dB(A)*
Radio Protocol	RTS
Radio Frequency	433.42 MHz (RTS)
Battery Type	12V 2600 mAh (built-in lithium-ion battery)
Low Battery Indicator	LED (on motor head)

Certifications



somfy® A BRAND OF **SOMFY** GROUP